

MM1S-GFP-LUC cells were generated from the human myeloma cell line MM1S by transduction with replication-defective lentivirus encoding eGFP and luciferase. Expression of eGFP was confirmed by flow cytometry (Figure 1) and expression of luciferase was confirmed by luminescence after exposure to luciferin (Figure 2).

Storage
Store vial in liquid nitrogen immediately upon receipt.
Formulation
Cells are cryopreserved in 0.5 ml - 1 ml of 90% FBS + 10% DMSO.
Thaw Protocol
Partially immerse the vial in a 37°C water bath with gentle shaking until most of the medium is thawed. In a tissue culture hood, add 1 ml of pre-warmed culture medium into the vial and immediately transfer the contents of the vial to a centrifuge tube containing 5-10 ml of pre-warmed culture medium. Centrifuge the tube at room temperature for 5 minutes, aspirate the supernatant and suspend the cell pellet in 5-10 ml of pre-warmed culture medium.
Culture Protocol
MM1S-GFP-LUC is a cell line that grows in suspension. Culture the cells in RPMI-1640 medium containing 10% FBS using a humidified incubator set to 5% CO ₂ . When the culture has reached a density of 2 million cells per ml, add a 10-fold volume of fresh, pre-warmed culture medium to the cells.
Notices & Disclaimer
ProMab Biotechnologies products are intended for laboratory research purposes only, not for use in humans. This product is not for resale and may not be transferred to a third party without written consent from ProMab Biotechnologies, Inc. To purchase this product, you must accept the terms and conditions of ProMab Biotechnologies' Material Transfer Agreement (MTA).

All products are for research use only

Discover more | ProMab.com



📍 2600 Hilltop Dr, Building B, Richmond, CA 94806
☎ 1.866.339.0871 | ✉ info@promab.com
☎ 510.740.3625 | ✉ customerservice@promab.com



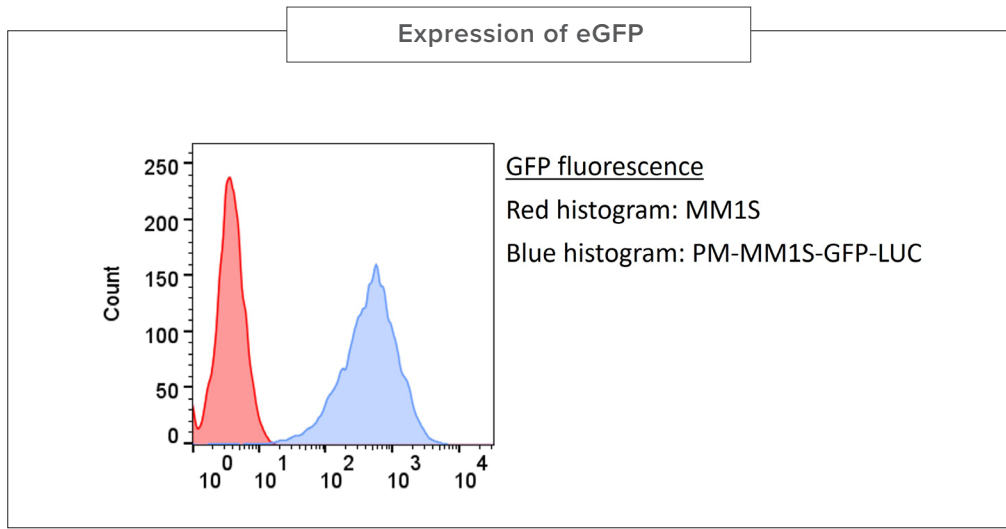


Figure 1. PM-MM1S-GFP-LUC cells and parental MM1S cells were analyzed for GFP fluorescence by flow cytometry. Only the PM-MM1S-GFP-LUC cells were fluorescent.

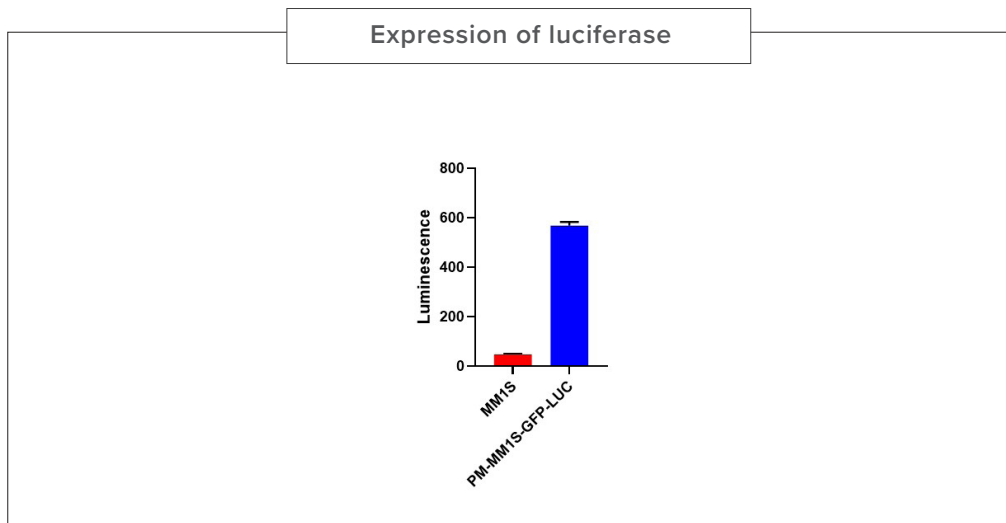


Figure 2. PM-MM1S-GFP-LUC cells and parental MM1S cells were lysed and incubated with luciferin to assess luciferase expression. Only PM-MM1S-GFP-LUC cells became luminescent.

All products are for research use only

Discover more | ProMab.com

