

HeLa ΔROR1 cells were generated from the human cervical cancer cell line HeLa by CRISPR followed by clonal selection. The loss of surface ROR1 expression was confirmed by flow cytometry (Figure 1).

<b>Storage</b>
Store vial in liquid nitrogen immediately upon receipt.
<b>Formulation</b>
Cells are cryopreserved in 0.5 ml - 1 ml of 90% FBS + 10% DMSO.
<b>Thaw Protocol</b>
Partially immerse the vial in a 37°C water bath with gentle shaking until most of the medium is thawed. In a tissue culture hood, add 1 ml of pre-warmed culture medium into the vial and immediately transfer the contents of the vial to a centrifuge tube containing 5-10 ml of pre-warmed culture medium. Centrifuge the tube at room temperature for 5 minutes, aspirate the supernatant and suspend the cell pellet in 5-10 ml of pre-warmed culture medium.
<b>Culture Protocol</b>
HeLa ΔROR1 is an adherent cell line. Culture the cells in DMEM containing 10% FBS using a humidified incubator set to 5% CO <sub>2</sub> . When the cell monolayer is nearly confluent, use trypsin-EDTA to detach the cells from the culture flask and immediately neutralize the trypsin by adding fresh, pre-warmed culture medium to the cells. Cells should be passaged at least twice per week.
<b>Notices &amp; Disclaimer</b>
ProMab Biotechnologies products are intended for laboratory research purposes only, not for use in humans. This product is not for resale and may not be transferred to a third party without written consent from ProMab Biotechnologies, Inc. To purchase this product, you must accept the terms and conditions of ProMab Biotechnologies' Material Transfer Agreement (MTA).

*All products are for research use only*

Discover more | [ProMab.com](https://www.promab.com)



📍 2600 Hilltop Dr, Building B, Richmond, CA 94806  
☎ 1.866.339.0871 | ✉ [info@promab.com](mailto:info@promab.com)  
📞 510.740.3625 | ✉ [customerservice@promab.com](mailto:customerservice@promab.com)



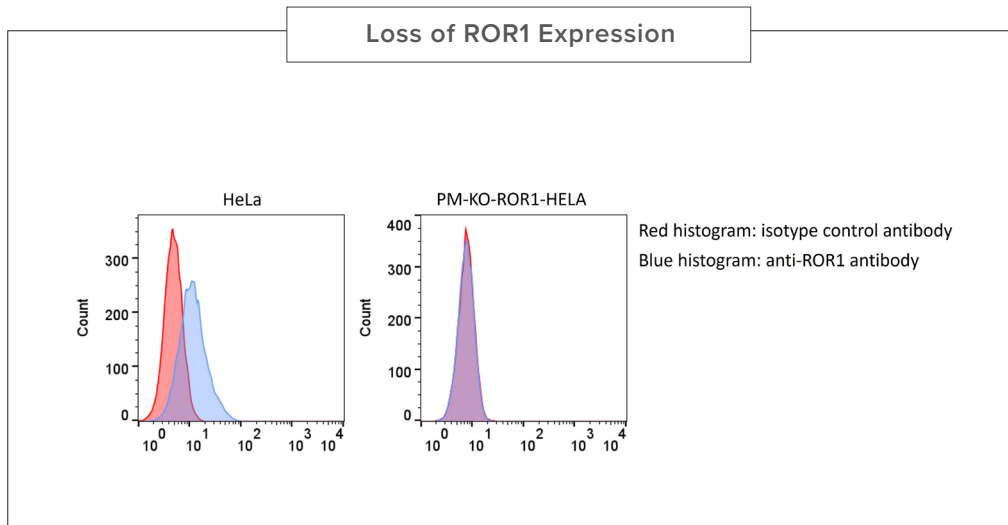


Figure 1. PM-KO-ROR1-HELA cells and parental HeLa cells were stained with an antibody specific for ROR1 and an isotype control antibody. The ROR1 antibody bound to HeLa cells but did not bind to PM-KO-ROR1-HELA cells.

All products are for research use only

Discover more | [ProMab.com](http://ProMab.com)



📍 2600 Hilltop Dr, Building B, Richmond, CA 94806  
 ☎ 1.866.339.0871 | ✉ info@promab.com  
 📞 510.740.3625 | ✉ customerservice@promab.com

