






Jurkat-GFP cells were generated from the human T cell leukemia cell line Jurkat by transduction with replication-defective lentivirus encoding eGFP. Expression of eGFP was confirmed by flow cytometry (Figure 1).

| Storage                                                                                                                                                                                                                                                                                                                                                                                                                                                            |
|--------------------------------------------------------------------------------------------------------------------------------------------------------------------------------------------------------------------------------------------------------------------------------------------------------------------------------------------------------------------------------------------------------------------------------------------------------------------|
| Store vial in liquid nitrogen immediately upon receipt.                                                                                                                                                                                                                                                                                                                                                                                                            |
| Formulation                                                                                                                                                                                                                                                                                                                                                                                                                                                        |
| Cells are cryopreserved in 0.5 ml - 1 ml of 90% FBS + 10% DMSO.                                                                                                                                                                                                                                                                                                                                                                                                    |
| Thaw Protocol                                                                                                                                                                                                                                                                                                                                                                                                                                                      |
| Partially immerse the vial in a 37°C water bath with gentle shaking until most of the medium is thawed. In a tissue culture hood, add 1 ml of pre-warmed culture medium into the vial and immediately transfer the contents of the vial to a centrifuge tube containing 5-10 ml of pre-warmed culture medium. Centrifuge the tube at room temperature for 5 minutes, aspirate the supernatant and suspend the cell pellet in 5-10 ml of pre-warmed culture medium. |
| Culture Protocol                                                                                                                                                                                                                                                                                                                                                                                                                                                   |
| Jurkat-GFP is a cell line that grows in suspension. Culture the cells in RPMI-1640 medium containing 10% FBS using a humidified incubator set to 5% CO <sub>2</sub> . When the culture has reached a density of 2 million cells per ml, add a 10-fold volume of fresh, pre-warmed culture medium to the cells.                                                                                                                                                     |
| Notices & Disclaimer                                                                                                                                                                                                                                                                                                                                                                                                                                               |
| ProMab Biotechnologies products are intended for laboratory research purposes only, not for use in humans. This product is not for resale and may not be transferred to a third party without written consent from ProMab Biotechnologies, Inc. To purchase this product, you must accept the terms and conditions of ProMab Biotechnologies' Material Transfer Agreement (MTA).                                                                                   |

*All products are for research use only*

Discover more | [ProMab.com](http://ProMab.com)



 2600 Hilltop Dr, Building B, Richmond, CA 94806  
 1.866.339.0871 |  [info@promab.com](mailto:info@promab.com)  
 510.740.3625 |  [customerservice@promab.com](mailto:customerservice@promab.com)



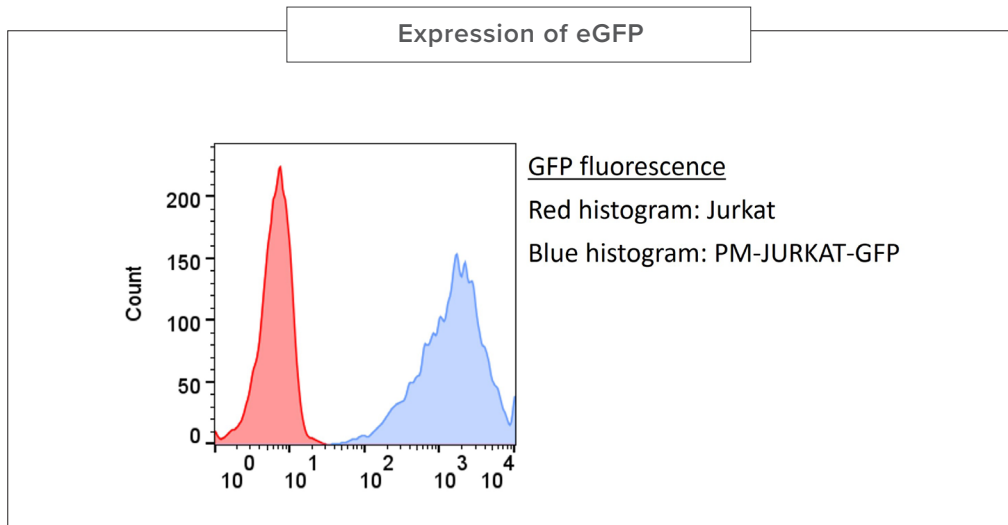


Figure 1. PM-JURKAT-GFP cells and parental Jurkat cells were analyzed for GFP fluorescence by flow cytometry. Only the PM-JURKAT-GFP cells were fluorescent.

*All products are for research use only*

Discover more | [ProMab.com](http://ProMab.com)



📍 2600 Hilltop Dr, Building B, Richmond, CA 94806  
☎ 1.866.339.0871 | ✉ [info@promab.com](mailto:info@promab.com)  
☎ 510.740.3625 | ✉ [customerservice@promab.com](mailto:customerservice@promab.com)

