

CT26-HER2-LUC cells were generated from the BALB/c mouse colon cancer cell line CT26 by transduction with replication-defective lentivirus encoding human HER2 and luciferase. Surface expression of HER2 was confirmed by flow cytometry (Figure 1) and expression of luciferase was confirmed by luminescence after exposure to luciferin (Figure 2).

<b>Storage</b>
Store vial in liquid nitrogen immediately upon receipt.
<b>Formulation</b>
Cells are cryopreserved in 0.5 ml - 1 ml of 90% FBS + 10% DMSO.
<b>Thaw Protocol</b>
Partially immerse the vial in a 37°C water bath with gentle shaking until most of the medium is thawed. In a tissue culture hood, add 1 ml of pre-warmed culture medium into the vial and immediately transfer the contents of the vial to a centrifuge tube containing 5-10 ml of pre-warmed culture medium. Centrifuge the tube at room temperature for 5 minutes, aspirate the supernatant and suspend the cell pellet in 5-10 ml of pre-warmed culture medium.
<b>Culture Protocol</b>
CT26-HER2-LUC is an adherent cell line. Culture the cells in RPMI-1640 medium containing 10% FBS using a humidified incubator set to 5% CO <sub>2</sub> . When the cell monolayer is nearly confluent, use trypsin-EDTA to detach the cells from the culture flask and immediately neutralize the trypsin by adding fresh, pre-warmed culture medium to the cells. Cells should be passaged at least twice per week.
<b>Notices &amp; Disclaimer</b>
ProMab Biotechnologies products are intended for laboratory research purposes only, not for use in humans. This product is not for resale and may not be transferred to a third party without written consent from ProMab Biotechnologies, Inc. To purchase this product, you must accept the terms and conditions of ProMab Biotechnologies' Material Transfer Agreement (MTA).

*All products are for research use only*

Discover more | [ProMab.com](http://ProMab.com)



📍 2600 Hilltop Dr, Building B, Richmond, CA 94806  
☎ 1.866.339.0871 | ✉ [info@promab.com](mailto:info@promab.com)  
☎ 510.740.3625 | ✉ [customerservice@promab.com](mailto:customerservice@promab.com)



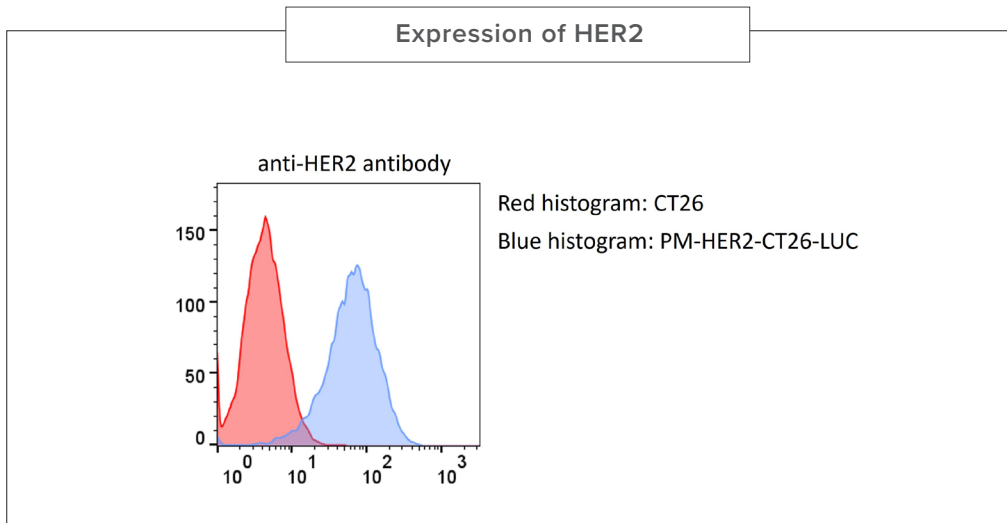


Figure 1. PM-HER2-CT26-LUC cells and parental CT26 cells were stained with an antibody specific for HER2. The HER2 antibody bound to PM-HER2-CT26-LUC cells but not to CT26 cells.

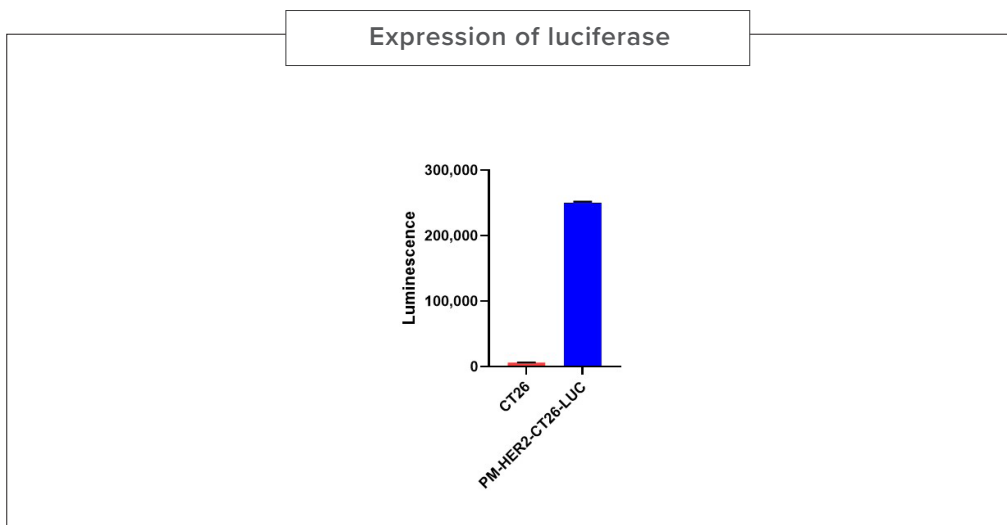


Figure 2. PM-HER2-CT26-LUC cells and parental CT26 cells were lysed and incubated with luciferin to assess luciferase expression. Only PM-HER2-CT26-LUC cells became luminescent.

All products are for research use only

Discover more | [ProMab.com](http://ProMab.com)



2600 Hilltop Dr, Building B, Richmond, CA 94806  
 1.866.339.0871 | info@promab.com  
 510.740.3625 | customerservice@promab.com

