

CHO-CD19 cells were generated from the chinese hamster ovary cell line CHO by transduction with replication-defective lentivirus encoding human CD19. Surface expression of CD19 was confirmed by flow cytometry (Figure 1).

| Storage |
|--|
| Store vial in liquid nitrogen immediately upon receipt. |
| Formulation |
| Cells are cryopreserved in 0.5 ml - 1 ml of 90% FBS + 10% DMSO. |
| Thaw Protocol |
| Partially immerse the vial in a 37°C water bath with gentle shaking until most of the medium is thawed. In a tissue culture hood, add 1 ml of pre-warmed culture medium into the vial and immediately transfer the contents of the vial to a centrifuge tube containing 5-10 ml of pre-warmed culture medium. Centrifuge the tube at room temperature for 5 minutes, aspirate the supernatant and suspend the cell pellet in 5-10 ml of pre-warmed culture medium. |
| Culture Protocol |
| CHO-CD19 is an adherent cell line. Culture the cells in F12k medium containing 10% FBS using a humidified incubator set to 5% CO ₂ . When the cell monolayer is nearly confluent, use trypsin-EDTA to detach the cells from the culture flask and immediately neutralize the trypsin by adding fresh, pre-warmed culture medium to the cells. Cells should be passaged at least twice per week. |
| Notices & Disclaimer |
| ProMab Biotechnologies products are intended for laboratory research purposes only, not for use in humans. This product is not for resale and may not be transferred to a third party without written consent from ProMab Biotechnologies, Inc. To purchase this product, you must accept the terms and conditions of ProMab Biotechnologies' Material Transfer Agreement (MTA). |

All products are for research use only

Discover more | ProMab.com



📍 2600 Hilltop Dr, Building B, Richmond, CA 94806
☎ 1.866.339.0871 | ✉ info@promab.com
📞 510.740.3625 | ✉ customerservice@promab.com



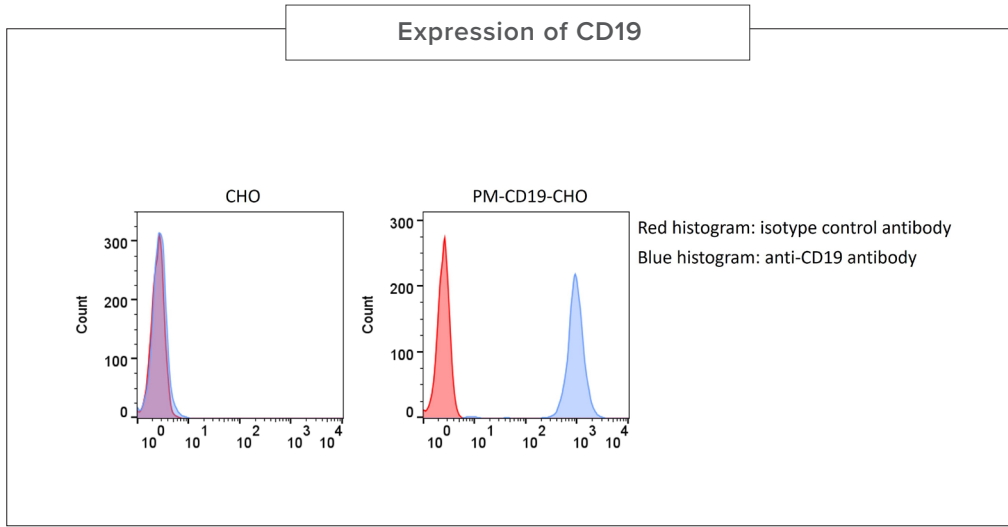


Figure 1. PM-CD19-CHO cells and parental CHO cells were stained with an antibody specific for CD19 and an isotype control antibody. The CD19 antibody bound to PM-CD19-CHO cells but not to CHO cells.

All products are for research use only

Discover more | ProMab.com



2600 Hilltop Dr, Building B, Richmond, CA 94806
 1.866.339.0871 | info@promab.com
 510.740.3625 | customerservice@promab.com

