

**Promab Biotechnologies' new product development programs are being designed for COVID-19 research and development.**

| Order Information   |  |       |
|---|--|-------|
| Catalog#  | Size   | Price |
| Pr40008   | 100ug  | \$299 |
| Description   |  |       |
| <p>The encoded protein is a functional receptor for the spike glycoprotein of the human coronaviruses SARS, the human respiratory coronavirus NL63 and is also a receptor for 2019-nCoV RBD protein.</p> <p>The ACE-2 protein encoded by this gene belongs to the angiotensin-converting enzyme family of dipeptidyl carboxydipeptidases and has considerable homology to human angiotensin 1 converting enzyme. This membrane protein catalyzes the cleavage of angiotensin I into angiotensin 1-9, and angiotensin II into the vasodilator angiotensin 1-7. The organ- and cell-specific expression of this gene suggests that it may play a role in the regulation of cardiovascular and renal function, as well as fertility.</p> <p>This ACE-2 protein was designed from amino acids 1-615 and has a human Fc tag.</p> |  |       |
| Specifications  |  |       |
| Gene ID   | Q9BYF1.2   |       |
| Expression Host   | HEK293 suspension cells  |       |
| Species   | Human  |       |
| Molecular Weight  | 110 kDa  |       |
| Sequence  | 1-615aa  |       |
| Formulation   | Sterile PBS  |       |
| Purity  | >95% visualized by SDS-PAGE under reducing conditions  |       |
| Storage   | Store at -20°C to -80°C. Avoid repeated freezing/thawing cycles. Thawed protein can be stored at 4°C for a limited period of time. |       |
| Application   |  |       |
| SDS-PAGE, ELISA, WB, other biochemical assays, such as high-throughput screening of small molecule drugs, antibodies, phage display assay.  |  |       |
| References  |  |       |
| Kruse R. Therapeutic strategies in an outbreak scenario to treat the novel coronavirus originating in Wuhan, China. 2020. F1000Research, 9:72 Last updated: 31 JAN 2020   |  |       |

#### Products and Services

- Mouse Monoclonal Antibody
- Bispecific Antibody
- Human Antibody
- Hybridoma Sequencing
- Polyclonal Antibody

## Data

### SDS-PAGE

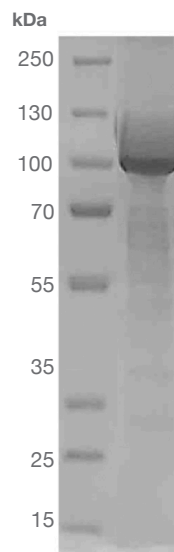


Figure 1. SDS-PAGE of recombinant protein ACE-2-human Fc.

### ELISA

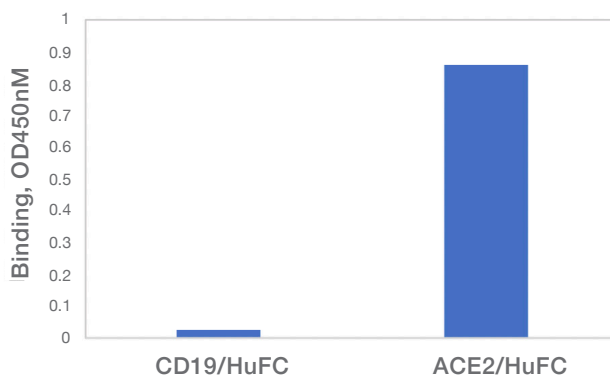


Figure 2. **Binding of ACE-2-human Fc protein to RBD-His protein by ELISA.**

Binding assay was performed with 2 ug of ACE-2-human Fc protein on pre-coated 96 well plate with 200 ng of either RBD protein or negative control CD19-human Fc protein. The secondary goat anti-human Fc-HRP antibody was used at 1:2000 dilution for detection of binding. OD450 binding is shown on Y-axis.

#### Products and Services

- Mouse Monoclonal Antibody
- Bispecific Antibody
- Human Antibody
- Hybridoma Sequencing
- Polyclonal Antibody