

**Promab Biotechnologies' new product development programs are being designed for COVID-19 research and development.**

Order Information		
Catalog#	Size	Price
Pr40007	100ug	\$399
Description		
<p>The encoded protein is a functional receptor for the spike glycoprotein of the human coronaviruses SARS, the human respiratory coronavirus NL63 and is also a receptor for 2019-nCoV RBD protein.</p> <p>The ACE-2 protein encoded by this gene belongs to the angiotensin-converting enzyme family of dipeptidyl carboxydiptidases and has considerable homology to human angiotensin 1 converting enzyme. This membrane protein catalyzes the cleavage of angiotensin I into angiotensin 1-9, and angiotensin II into the vasodilator angiotensin 1-7. The organ- and cell-specific expression of this gene suggests that it may play a role in the regulation of cardiovascular and renal function, as well as fertility.</p> <p>This ACE-2 protein was designed without its signal peptide spanning from amino acids 18-615 and has a human Fc tag.</p>		
Specifications		
Gene ID	Q9BYF1.2	
Expression Host	HEK293 suspension cells	
Species	Human	
Molecular Weight	100 kDa	
Sequence	18-615aa	
Formulation	Sterile PBS	
Purity	>95% visualized by SDS-PAGE under reducing conditions	
Storage	Store at -20°C to -80°C. Avoid repeated freezing/thawing cycles. Thawed protein can be stored at 4°C for a limited period of time.	
Application		
<p>SDS-PAGE, ELISA, WB, other biochemical assays. The ACE-2 binding assay with COV2019 RBD-His recombinant protein by ELISA can be used for high-throughput screening of small molecule drugs, antibodies, phage display assay.</p>		
References		
<p>Kruse R. Therapeutic strategies in an outbreak scenario to treat the novel coronavirus originating in Wuhan, China. 2020. F1000Research, 9:72 Last updated: 31 JAN 2020</p>		

#### Products and Services

- Mouse Monoclonal Antibody
- Bispecific Antibody
- Human Antibody
- Hybridoma Sequencing
- Polyclonal Antibody

## Data

### SDS-PAGE



Figure 1. SDS-PAGE of recombinant protein ACE-2-human Fc.

### ACE-2 (1-615 aa)-hFc

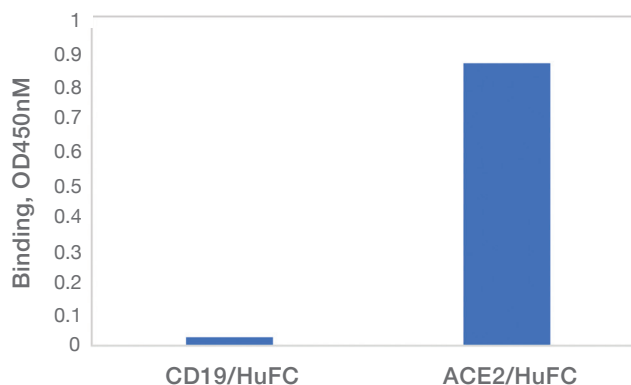


Figure 2. **Binding of ACE-2-human Fc protein to RBD-His protein by ELISA.**

Binding assay was performed with 2 ug of ACE-2-(1-615 aa) hFc human Fc protein on pre-coated 96 well plate with 200 ng of either RBD protein or negative control / CD19-human Fc protein. The secondary goat anti-human Fc-HRP antibody was used at 1:2000 dilution for detection of binding. OD450 binding is shown on Y-axis.

#### Products and Services

- Mouse Monoclonal Antibody
- Bispecific Antibody
- Human Antibody
- Hybridoma Sequencing
- Polyclonal Antibody