

BTLA-TF mRNA-LNP

Ready-to-use lipid nanoparticles

Order Information

Catalog#	Size	GenPept No.
PM-LNP-0104	200uL	

Description

BTLA (B- and T-lymphocyte attenuator), also known as CD272, is a transmembrane glycoprotein belonging to the CD28 immunoglobulin superfamily (IgSF), encoded by the BTLA gene. BTLA is highly expressed in lymph nodes, thymus, and spleen, but not expressed or expressed at low levels in liver, kidney, heart, and brain. The BTLA ligand is herpes virus entry mediator (HVEM) belonging to the tumor necrosis factor receptor superfamily (TNFRSF). HVEM is present on T cells, B cells, NK cells, DCs, myeloid cells, and a variety of tumor cells. Ligation of BTLA by HVEM blocks activation, proliferation and cytokine production of B and T cells. BTLA shares structural and functional similarities with CTLA-4 and PD-1 and consists of extracellular, transmembrane and cytoplasmic domains.

Composition

mRNA-LNPs suspended in PBS (-Ca, -Mg) (pH: 7.0-7.4).

Translated Protein sequence

Available up request

Products and Services

- Monoclonal Antibody
- Bispecific Antibody
- mRNA-LNP
- Hybridoma Sequencing
- CAR-T/NK
- Stable Cell Line

BTLA-TF mRNA-LNP

Ready-to-use lipid nanoparticles

Storage

Product is delivered on blue ice. Store at 4°C for up to 3 months.

Application & Handling

Upon receiving product, briefly pulse spin before opening to ensure product is at bottom of container. It is important not to spin for too long as this may rupture mRNA-LNPs. Do not vortex. Work with mRNA-LNPs on ice and minimize the time that the product spends at room temperature. After handling the product during experiments, return immediately to ice. mRNA-LNP products should only be handled with certified RNase-free reagents and consumables. Use of filtered pipette tips is highly recommended.

Safety & Research Disclosure

All ProMab mRNA lipid nanoparticle products are for in vitro research use only. Products are not FDA approved for human use.

General Protocol

1. Prior to transfection: Plate 1ml of cells at a density of [1.0E6 cells/ml] in a single well of a 12-well culture plate. Ensure the cells you are using are viable and healthy. Try not to let your cells sit for longer than 5 minutes prior to transfection. Cell clumping at the time of transfection may reduce transfection efficiency. *Note: If cell clumping occurs, gently pipette your culture up & down to ensure you have a single cell suspension before transfecting.
2. Briefly pipette mRNA-LNP mix up & down to resuspend. Add 20-40ul of the mRNA-LNP product dropwise directly to your 1ml culture. Gently tilt plate back and forth to mix (not necessary if you are using cells which will be immediately placed back into a shaker). Place your transfected cells back into their original culture conditions.
3. Check cell expression by FACS or by using other detection methods at 24hr intervals after transfection. *Note: This is a generalized protocol for transfection using mammalian suspension culture cells. Transfection volume may be scaled up or down proportionately using the volumes given. HEK-293s cells were grown and transfected in FreeStyle™ F17 Expression Medium (Gibco, Cat#: A1383501), supplemented with GlutaMAX™ (Gibco, Cat#: 35050061), and Poloxamer 188 Non-ionic Surfactant (Gibco, Cat#: 24040032). T-cells were grown and transfected in a culture medium supplemented with 10% FBS (Omega Scientific, Cat#: FB-02). When transfecting cells using mRNA-LNPs, it is typically necessary for the cell culture medium to be supplemented with 10% FBS at the time of transfection. Without this supplement, transfection efficiency will drop significantly. For mRNA-LNP transfection of cells which cannot use FBS in the culture medium, please contact us at (510) 860-4615. Alternative transfection methods are available.

Products and Services

- Monoclonal Antibody
- Bispecific Antibody
- mRNA-LNP
- Hybridoma Sequencing
- CAR-T/NK
- Stable Cell Line

BTLA-TF mRNA-LNP

Ready-to-use lipid nanoparticles

Expression of Human BTLA-TF in S293 Cells Transfected with PM-LNP-0104

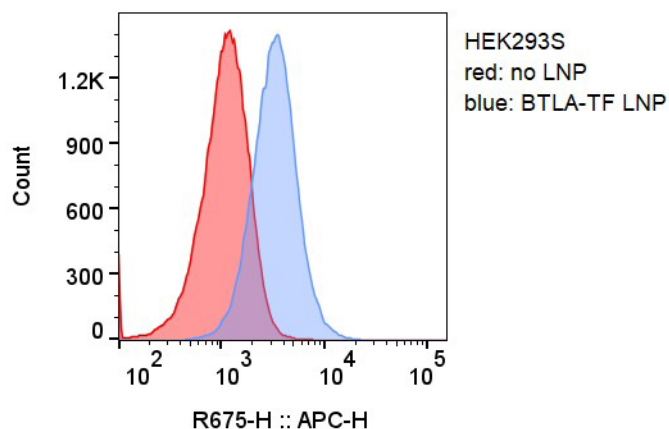


Figure 1. Flow Cytometry. PM-LNP-0104 nanoparticle-treated HEK293S cells express TF-tagged BTLA protein, detected with a labeled anti-TF antibody.

Secretion of Human BTLA-TF by S293 Cells Transfected with PM-LNP-0104

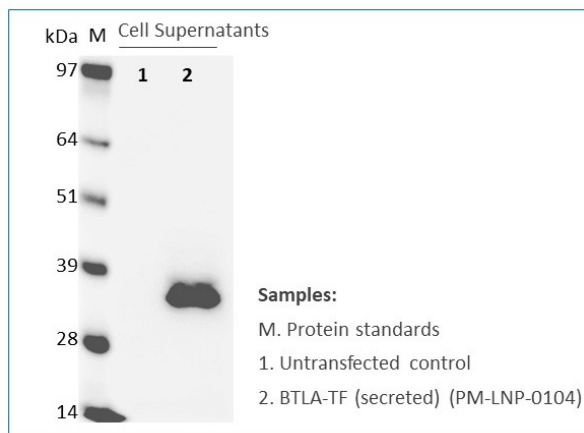


Figure 2. Western Blot. Medium collected from PM-LNP-0104 nanoparticle-treated HEK293S cells contains TF-tagged BTLA protein, detected with an anti-TF antibody.

Products and Services

- Monoclonal Antibody
- Bispecific Antibody
- mRNA-LNP
- Hybridoma Sequencing
- CAR-T/NK
- Stable Cell Line